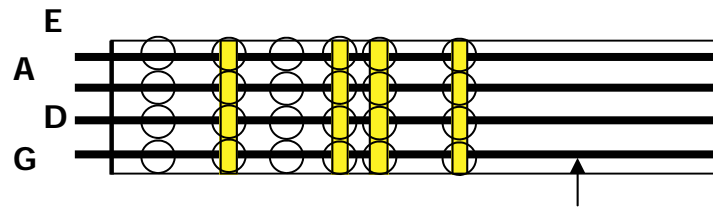
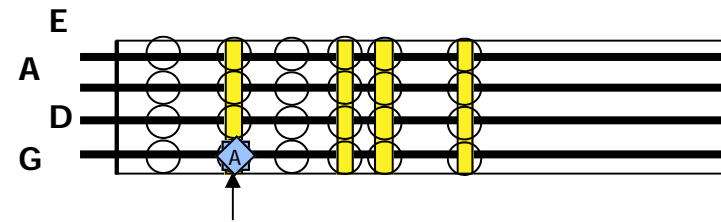


Open Strings



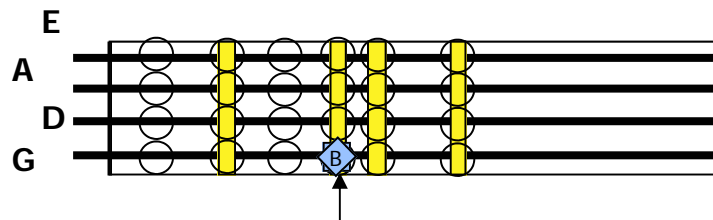
Open G String, the lowest string on the Violin.

Open Strings



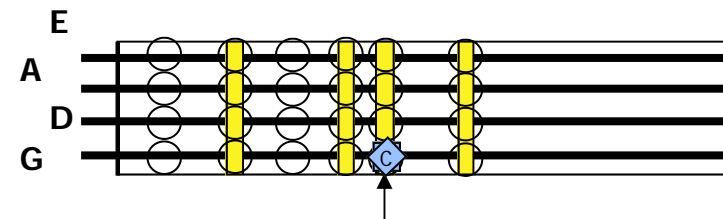
A, first finger on the first tape (or about an inch from the nut) on the G string.

Open Strings

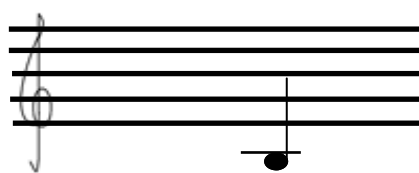
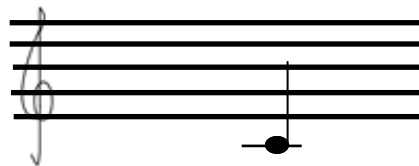
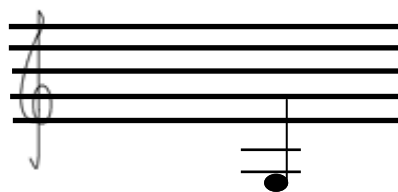
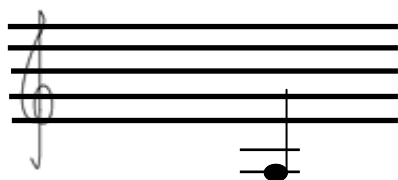


B, second finger on the second tape (or about two inches from the nut) on the G string.

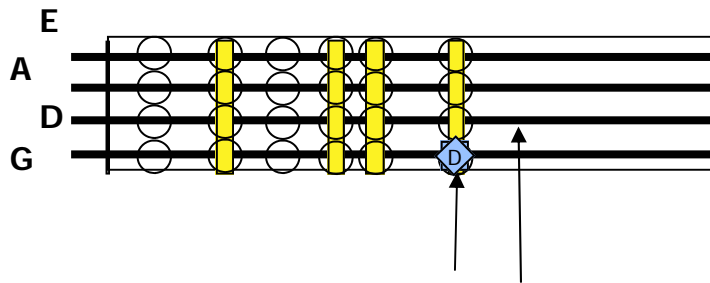
Open Strings



C, third finger on the third tape (or about two and a half inches from the nut) on the G string.

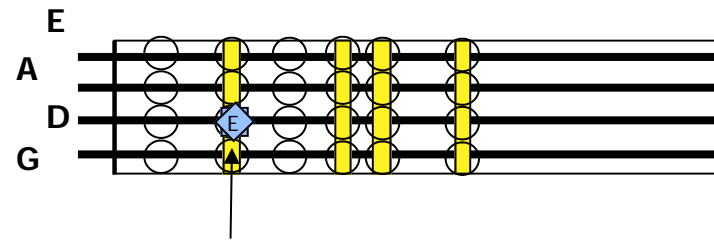


Open Strings



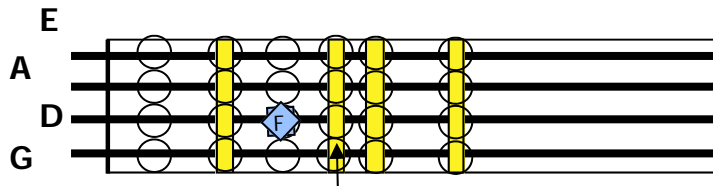
Open D string or fourth finger on the forth tape (or about three inches from the nut) on the G string.

Open Strings



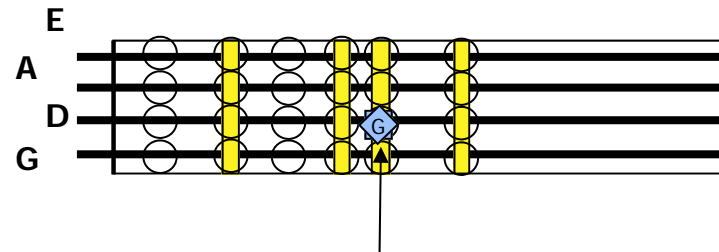
E, first finger on the first tape (or about an inch from the nut) on the D string.

Open Strings

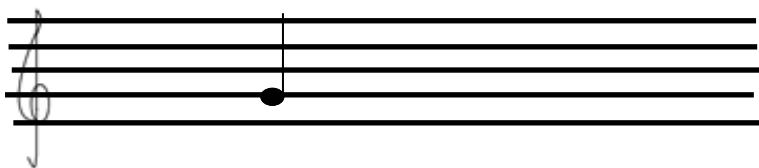
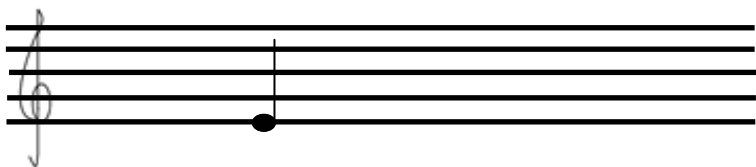


F, second finger between the first and second tape (or about an inch and a half from the nut) on the D string. (Second finger on the tape is an F#.)

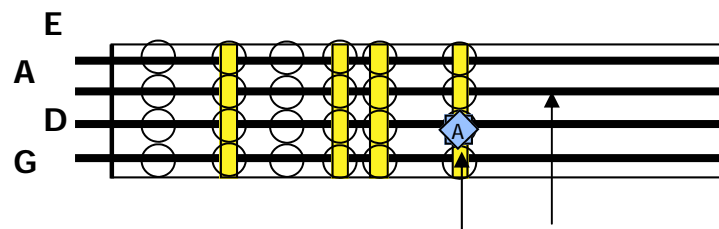
Open Strings



G, third finger on the third tape (or about two and a half inches from the nut) on the D String.

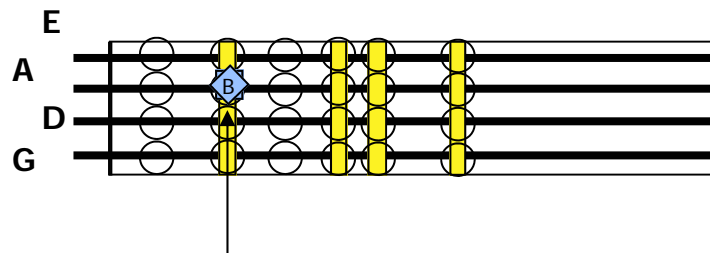


Open Strings



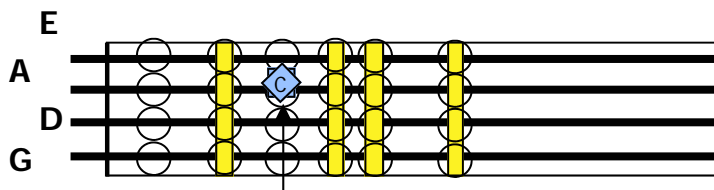
Open A or fourth finger on the fourth fret (or about three inches from the nut) on the D string.

Open Strings



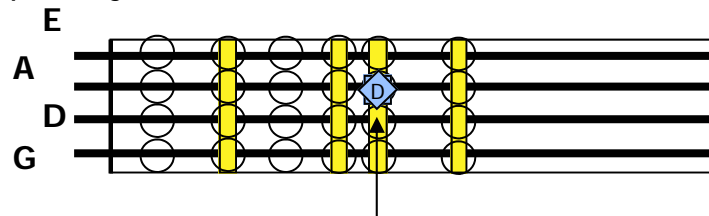
B, first finger on the first fret (or about an inch from the nut) on the A string.

Open Strings

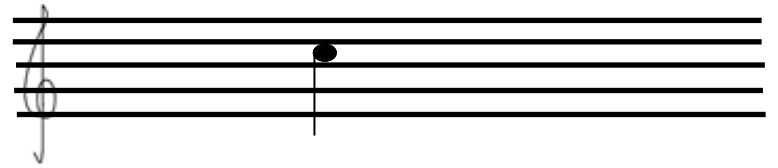
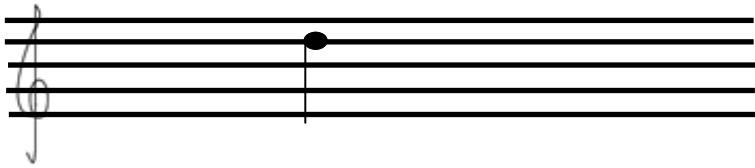
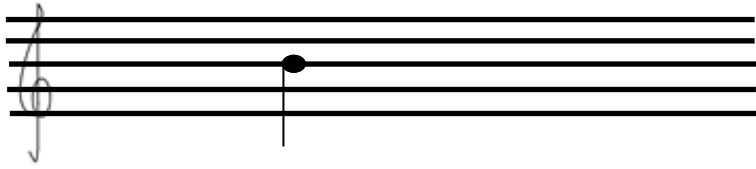


C, second finger between the first and second fret on the A string. (The note on the second fret is C#.)

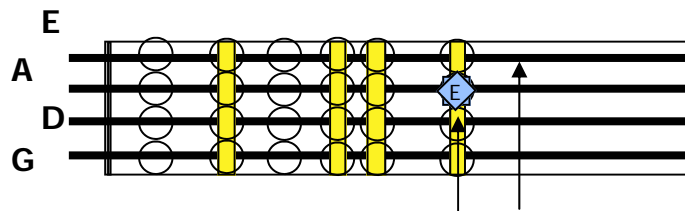
Open Strings



D, third finger on the third fret (or about two and an half inches from the nut) on the A string.

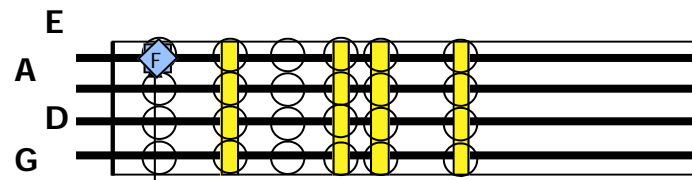


Open Strings



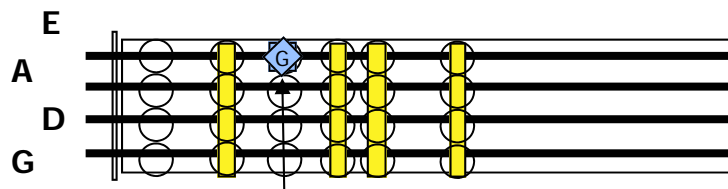
Open E or fourth finger on the fourth tape on the A string.

Open Strings



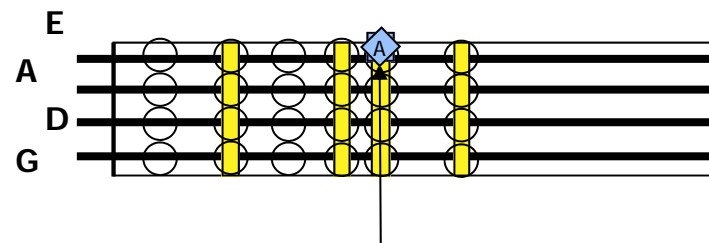
F, first finger on between the nut and the first tape on the E string. (The note on the first tape is F#.)

Open Strings

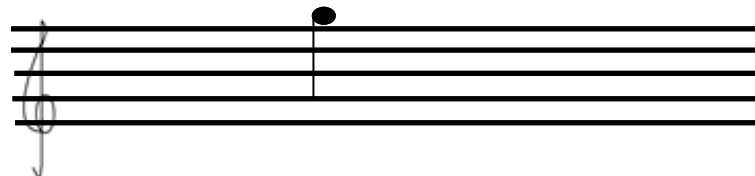
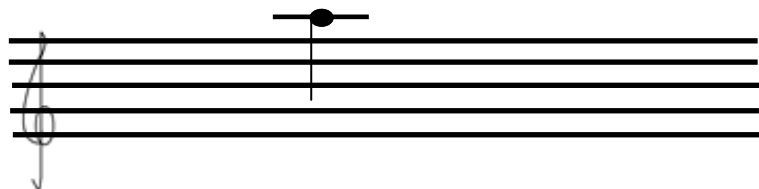
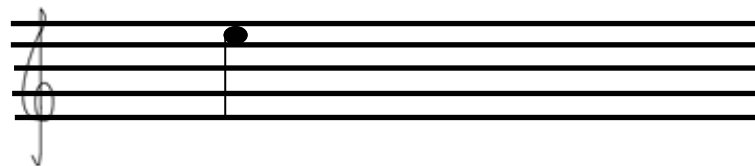
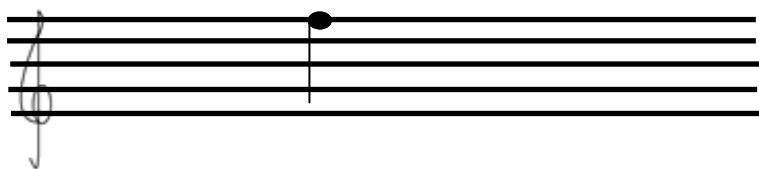


G, second finger between the first and second tape (or about an inch and a half from the nut) on the E string.

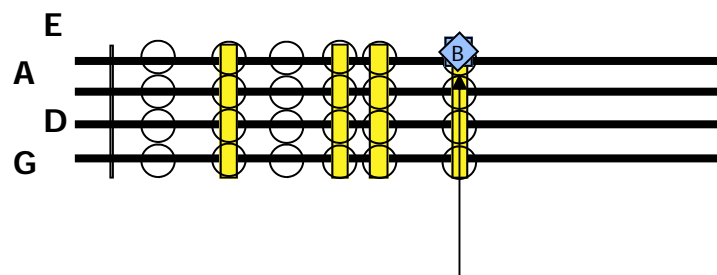
Open Strings



A, third finger on the third tape (or about two and a half inches from the nut) on the G string.

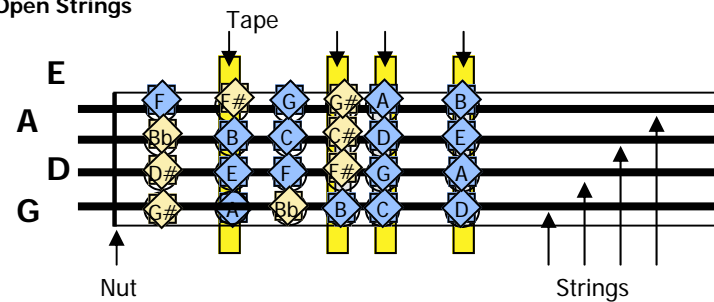


Open Strings

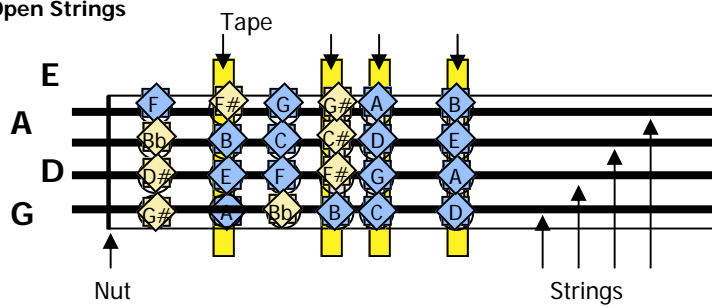


B, fourth finger on the fourth tape (or about three inches from the nut) on the E string.

Open Strings



Open Strings



Open Strings

